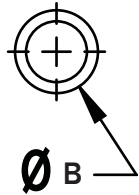
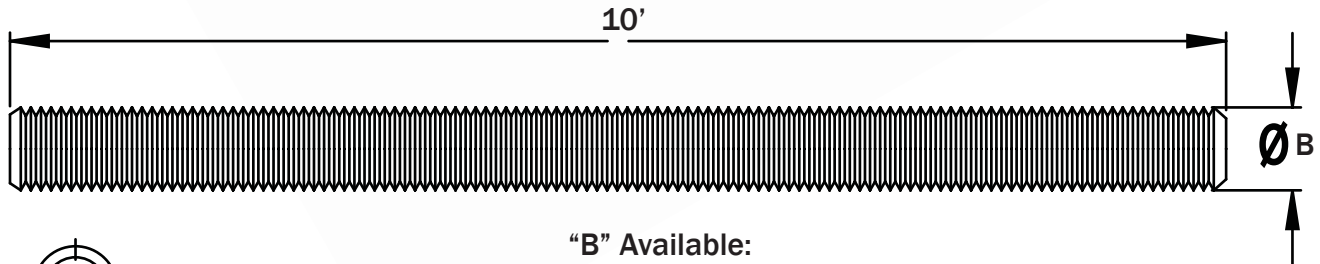


Threaded Rod, Lugs and Eye Bolts

UNITED BRAND

THREADED ROD

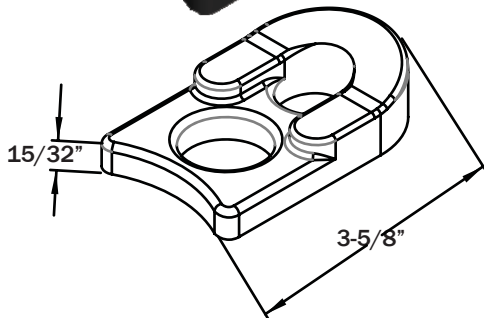


"B" Available:
3/8", 5/8" or 3/4"

All Threaded Rod is manufactured for NAPAC, Inc. and meets the minimum physical requirements of ASTM A36 and A307 and is manufactured from 10-06/1008/1010 steel.

Rod is plain finished.

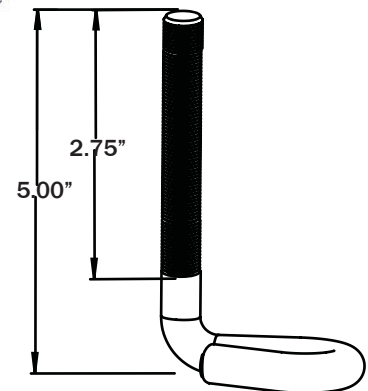
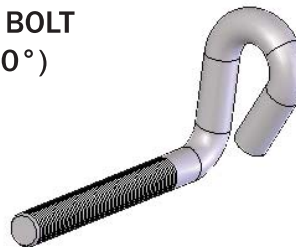
LUG



This "Duclug" (Ductile Lug) is designed to facilitate the restraining of pipe joints to prevent pull out.

Material Specs: Ductile Iron per ASTM A536, Grade 65-45-12. Accommodates 3/4" rod with a maximum load of 7500 lbs.

EYE BOLT (90°)



The 90° Eye Bolt is used with 3/4" heavy hex nut and washer to help restrain pipe joints to prevent pull out.

Material Specs: 3/4" UNC rolled thread, high strength low alloy steel per AWWA C111. Accommodates 3/4" rod with a maximum load of 7500 lbs.

We carry Washers, Nuts and Rod Connectors

NAPAC, Inc.

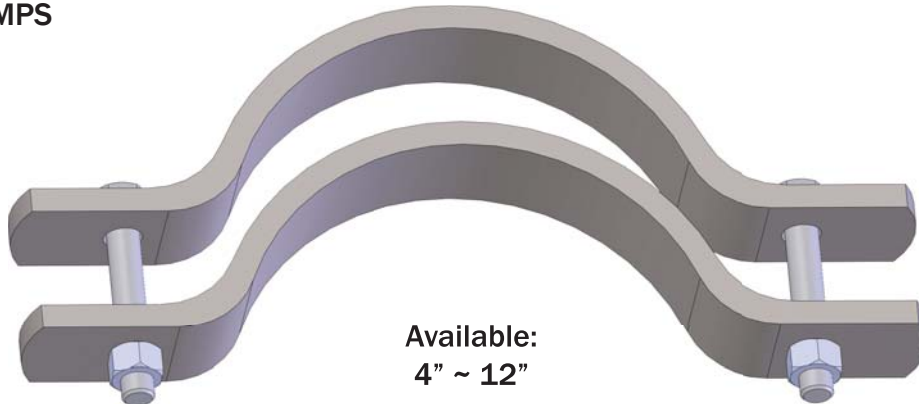
229 Southbridge Street, Worcester, MA 01608 U.S.A.

Tel: (800) 807-2215 • Fax: (800) 807-2214

Socket Clamps for Ductile Iron Pipe

**UNITED
BRAND**

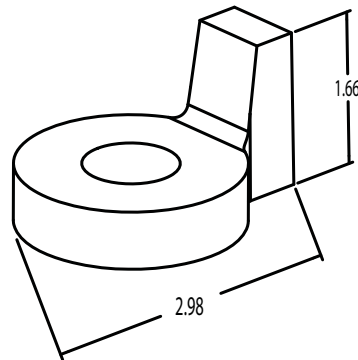
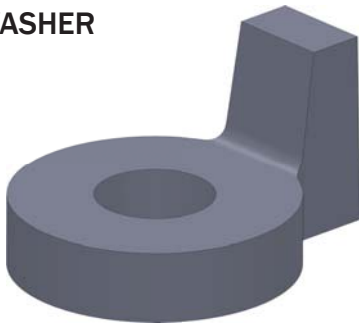
SOCKET CLAMPS



Also commonly known as “retainer clamps” or “friction clamps” For use in retaining underground pipe joints from separation.

All socket clamps include two steel half clamps, two bolts and nuts and two cast iron washers. Used with all thread-rod, NAPAC Duc-Lugs or bent eye-bolts for joint restraint.

DOG WASHER



Used with NAPAC Socket Clamps to secure tie rods. The projecting lug bears against the clamp bolt to prevent washer and tie rod from slipping off clamp. Can be used with Threaded rod up to 3/4"

We carry Washers, Nuts and Rod Connectors

NAPAC, Inc.

229 Southbridge Street, Worcester, MA 01608 U.S.A.

Tel: (800) 807-2215 • Fax: (800) 807-2214