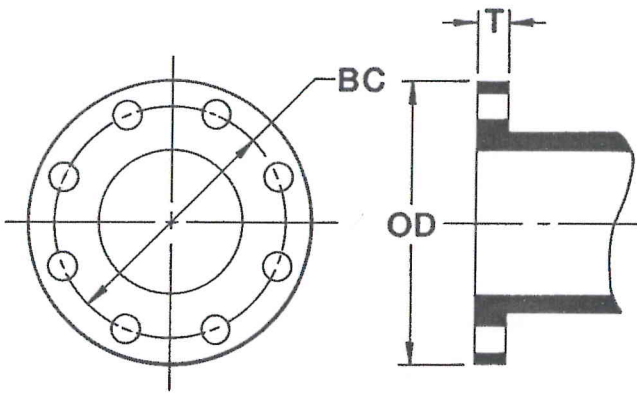


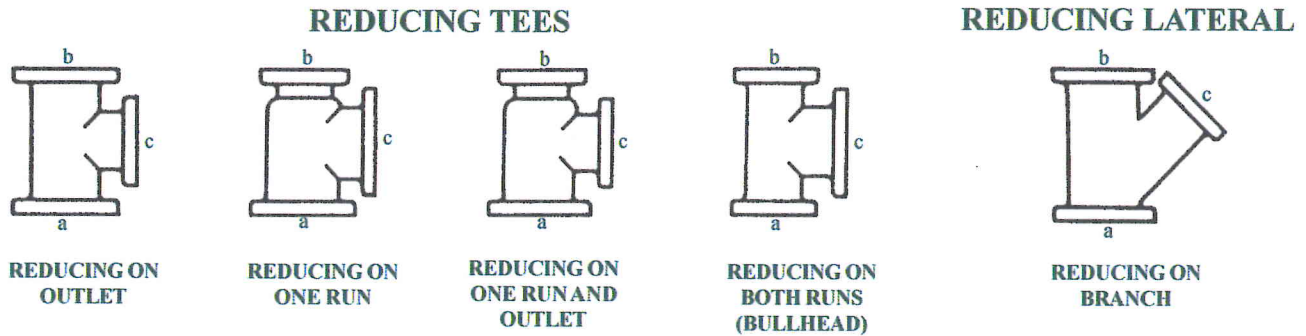
## FLANGE DETAILS - Class 125



Size	O.D.	B.C.	T	Bolt Hole Dia.	Bolt Dia. & Length	No. of Bolts
2	6.00	4.75	5/8	3/4	5/8 x 2-1/2	4
2-1/2	7.00	5.50	11/16	3/4	5/8 x 2-1/2	4
3	7.50	6.00	3/4	3/4	5/8 x 2-1/2	4
4	9.00	7.50	15/16	3/4	5/8 x 3	8
5	10.00	8.50	15/16	7/8	3/4 x 3-1/2	8
6	11.00	9.50	1	7/8	3/4 x 3-1/2	8
8	13.50	11.75	1-1/8	7/8	3/4 x 3-1/2	8
10	16.00	14.25	1-3/16	1	7/8 x 4	12
12	19.00	17.00	1-1/4	1	7/8 x 4	12
14	21.00	18.75	1/3/8	1-1/8	1 x 4-1/2	12
16	23.50	21.25	1-7/16	1-1/8	1 x 4-1/2	16
18	25.00	22.75	1-9/16	1-1/4	1-1/8 x 5	16
20	27.50	25.00	1-11/16	1-1/4	1-1/8 x 5	20
24	32.00	29.50	1-7/8	1-3/8	1-1/4 x 5-1/2	20

All dimensional data in inches and lbs.

## DESIGNATION of OUTLETS In accordance with ANSI B16.1



The largest opening establishes the basic size of a reducing fitting. The largest opening is named first, except for bullhead tees, which are reducing on both runs, and for double branch elbows where both branches are reducing. The outlet is the largest opening and named last in both cases.

In designating the openings of reducing fittings, they should be read in the order indicated by the sequence of the letters a, b, c.

## UNITED BRAND FITTINGS

Our dedication to the mechanical piping industry has given us the opportunity to provide you with a quality line of flanged fittings exceeding the competition. Manufactured from high strength grey cast iron and ductile iron, our Flanged Fittings Series are available in 1" - 48" sizes in a variety of elbows, tees, crosses, laterals, reducers, and blind flanges. All are manufactured in accordance with ANSI B16.1, and all are available with special rust inhibitive primers and epoxy coatings.