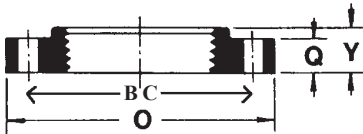


# Cast Iron Threaded Flanges ANSI B16.1, Class125

# UNITED BRAND

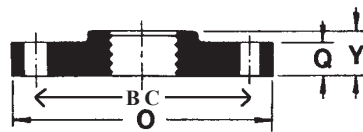
DIMENSIONS IN INCHES - WEIGHT IN LBS.

STANDARD  
COMPANION  
FLANGE  
Cast Iron #306



Nominal Size	Product No.	BC	O	Q	Y	Bolt Holes		Wgt.
						No.	Size	
1	W-306-100-0425	3.12	4 1/4	7/16	11/16	4	0.62	1.75
1-1/4	W-306-125-0463	3.50	4 5/8	1/2	13/16	4	0.62	2.00
1-1/2	W-306-150-0500	3.88	5	9/16	7/8	4	0.62	2.25
2	W-306-200-0600	4.75	6	5/8	1	4	0.75	4.00
2-1/2	W-306-250-0700	5.50	7	11/16	1-1/8	4	0.75	6.00
3	W-306-300-0750	6.00	7-1/2	3/4	1-3/16	4	0.75	7.63
3-1/2	W-306-350-0850	7.00	8-1/2	13/16	1-1/4	8	.75	9.50
4	W-306-400-0900	7.50	9	15/16	1-5/16	8	0.75	11.75
5	W-306-500-1000	8.50	10	15/16	1-7/16	8	0.88	14.00
6	W-306-600-1100	9.50	11	1	1-9/16	8	0.88	16.50
8	W-306-800-1350	11.75	13-1/2	1-1/8	1-3/4	8	0.88	26.00
10	W-306-1000-1600	14.25	16	1-3/16	1-15//16	12	1.00	38.00
12	W-306-1200-1900	17.00	19	1-1/4	2-3/16	12	1.00	51.00

REDUCING  
COMPANION  
FLANGE  
Cast Iron #316



Nominal Size		Product No.	Thread Size	BC	O	Q	Y	Bolt Holes		Wgt.
Pipe x O.D.	Flg. x Pipe							No.	Size	
1 x 5	1-1/2 x 1	W-316-100-0500	1	3.88	5	9/16	11/16	4	0.62	2.75
1-1/4 x 5	1-1/2 x 1-1/4	W-316-125-0500	1-1/4	3.88	5	9/16	13/16	4	0.62	2.50
1 x 6	2 x 1	W-316-100-0600	1	4.75	6	5/8	11/16	4	0.75	5.00
1-1/4 x 6	2 x 1-1/4	W-316-125-0600	1-1/4	4.75	6	5/8	13/16	4	0.75	4.75
1-1/2 x 6	2 x 1-1/2	W-316-150-0600	1-1/2	4.75	6	5/8	7/8	4	0.75	4.50
1-1/2 x 7	2-1/2 x 1-1/2	W-316-150-0700	1-1/2	5.50	7	11/16	7/8	4	0.75	7.00
2 x 7	2-1/2 x 2	W-316-200-0700	2	5.50	7	11/16	1	4	0.75	6.75
1 x 7-1/2	3 x 1	W-316-100-0750	1	6.00	7-1/2	3/4	13/16	4	0.75	9.00
1-1/2 x 7-1/2	3 x 1-1/2	W-316-150-0750	1-1/2	6.00	7-1/2	3/4	7/8	4	0.75	8.75
2 x 7-1/2	3 x 2	W-316-200-0750	2	6.00	7-1/2	3/4	1	4	0.75	8.50
2-1/2 x 7-1/2	3 x 2-1/2	W-316-250-0750	2-1/2	6.00	7-1/2	3/4	1-1/8	4	0.75	8.00
1-1/2 x 9	4 x 1-1/2	W-316-150-0900	1-1/2	7.50	9	15/16	1	8	0.75	14.75
2 x 9	4 x 2	W-316-200-0900	2	7.50	9	15/16	1	8	0.75	14.00
2-1/2 x 9	4 x 2-1/2	W-316-250-0900	2-1/2	7.50	9	15/16	1-1/8	8	0.75	13.50
3 x 9	4 x 3	W-316-300-0900	3	7.50	9	15/16	1-3/16	8	0.75	12.75
3 x 10	5 x 3	W-316-300-1000	3	8.50	10	15/16	1-3/16	8	0.88	17.00
4 x 10	5 x 4	W-316-400-1000	4	8.50	10	15/16	1-5/16	8	0.88	16.00
1-1/2 x 11	6 x 1-1/2	W-316-150-1100	1-1/2	9.50	11	1	1-1/16	8	0.88	27.00
2 x 11	6 x 2	W-316-200-1100	2	9.50	11	1	1-1/16	8	0.88	26.00
2-1/2 x 11	6 x 2-1/2	W-316-250-1100	2-1/2	9.50	11	1	1-1/8	8	0.88	25.00
3 x 11	6 x 3	W-316-300-1100	3	9.50	11	1	1-3/16	8	0.88	23.00
4 x 11	6 x 4	W-316-400-1100	4	9.50	11	1	1-5/16	8	0.88	21.00
5 x 11	6 x 5	W-316-500-1100	5	9.50	11	1	1-7/16	8	0.88	19.00
2 x 13-1/2	8 x 2	W-316-200-1350	2	11.75	13-1/2	1-1/8	1-3/16	8	0.88	44.00
3 x 13-1/2	8 x 3	W-316-300-1350	3	11.75	13-1/2	1-1/8	1-3/16	8	0.88	40.00
4 x 13-1/2	8 x 4	W-316-400-1350	4	11.75	13-1/2	1-1/8	1-5/16	8	0.88	37.00
5 x 13-1/2	8 x 5	W-316-500-1350	5	11.75	13-1/2	1-1/8	1-7/16	8	0.88	34.00
6 x 13-1/2	8 x 6	W-316-600-1350	6	11.75	13-1/2	1-1/8	1-9/16	8	0.88	31.00

Note: Design subject to change without notice.

**NAPAC, Inc.**

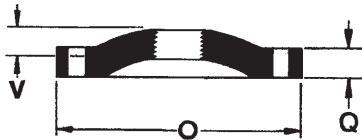
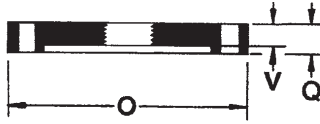
229 Southbridge Street, Worcester, MA 01608  
Tel.: (800) 807-2215 • Fax: (800) 807-2214

# Threaded Flanges ANSI B16.1, Class 125

# UNITED BRAND

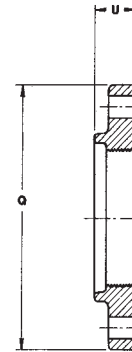
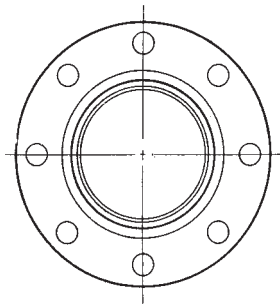
## BLIND FLANGE w/2" NPT

DIMENSIONS IN INCHES - WEIGHT IN LBS.



Size	Part No. (C.I.)	Part No. (D.I.)	O	Q	V	Weight
2-1/2	W-61F-0250-G	W-61F-0250-D	7.00	.68	.62	7
3	W-61F-0300-G	W-61F-0300-D	7.50	.75	.69	9
4	W-61F-0400-G	W-61F-0400-D	9.00	.94	.88	16
5	W-61F-0500-G	W-61F-0500-D	10.00	.94	.88	18
6	W-61F-0600-G	W-61F-0600-D	11.00	1.00	.94	25
8	W-61F-0800-G	W-61F-0800-D	13.50	1.12	1.06	42
10	W-61F-1000-G	W-61F-1000-D	16.00	1.19	1.12	62
12	W-61F-1200-G	W-61F-1200-D	19.00	1.25	.81	85
14	W-61F-1400-G	W-61F-1400-D	21.00	1.38	.88	120
16	W-61F-1600-G	W-61F-1600-D	23.50	1.44	1.00	145
18	W-61F-1800-G	W-61F-1800-D	25.00	1.56	1.06	185
20	W-61F-2000-G	W-61F-2000-D	27.50	1.69	1.12	245
24	W-61F-2400-G	W-61F-2400-D	32.00	1.88	1.25	370
30	W-61F-3000-G	W-61F-3000-D	38.75	2.12	1.44	500
36	W-61F-3600-G	W-61F-3600-D	46.00	2.38	1.62	790
42	W-61F-4200-G	W-61F-4200-D	53.00	2.62	1.81	1175
48	W-61F-4800-G	W-61F-4800-D	59.50	2.75	2.00	1585

DUCTILE IRON  
THREADED FLANGE  
(for use on fabricated ductile  
pipe to AWWA C115)



Nom. Pipe Size	Part No.	Rough O.D. of Pipe	Overall Thk. U	O.D. of Flange Q	Weight	Bolt Circle	Bolt Hole Dia.	No. of Bolt Holes
3	W-500-03-D	3.96	1.25	7.50	8	6.00	3/4	4
4	W-500-04-D	4.80	1.37	9.00	14	7.50	3/4	8
6	W-500-06-D	6.90	1.56	11.00	19	9.50	7/8	8
8	W-500-08-D	9.05	1.87	13.50	30	11.75	7/8	8
10	W-500-10-D	11.10	2.00	16.00	41	14.25	1	12
12	W-500-12-D	13.20	2.25	19.00	62	17.00	1	12
14	W-500-14-D	15.30	2.50	21.00	75	18.75	1-1/8	12
16	W-500-16-D	17.40	2.75	23.50	96	21.25	1-1/8	16
18	W-500-18-D	19.50	3.00	25.00	100	22.75	1-1/4	16
20	W-500-20-D	21.60	3.25	27.50	128	25.00	1-1/4	20
24	W-500-24-D	25.80	3.50	32.00	175	29.50	1-3/8	20
30	W-500-30-D	32.00	3.37	38.75	250	36.00	1-3/8	28
36	W-500-36-D	38.30	4.00	46.00	375	42.75	1-5/8	32
42	W-500-42-D	44.50	4.50	53.00	532	49.50	1-5/8	36
48	W-500-48-D	50.80	5.12	59.50	663	56.00	1-5/8	44

Note: Design subject to change without notice.

**NAPAC, Inc.**

229 Southbridge Street, Worcester, MA 01608

Tel.: (800) 807-2215 • Fax: (800) 807-2214