

## UNITED BRAND FITTINGS

Our dedication to the mechanical piping industry has given us the opportunity to provide you with a quality comprehensive line of ductile iron flanged fittings exceeding competitive brands.

Manufactured from high strength ductile iron, our flanged fitting series are available in 3"~48" sizes in a variety of elbows, tees, crosses, laterals, reducers, and blind flanges. All are manufactured in strict accordance with AWWA C110, ANSI A21.10.

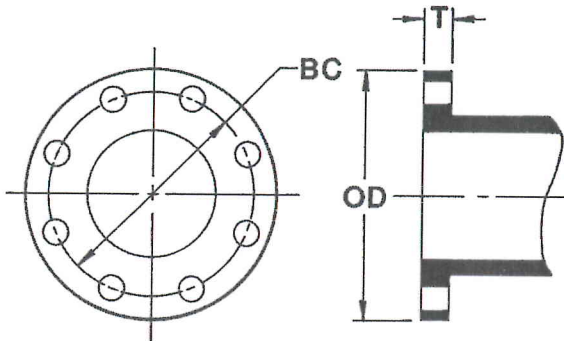
**Material:** Ductile Iron, ASTM A536

**Flange:** Faced and drilled in accordance with ANSI B16.1 Class 125

**Lining:** The standard lining is cement mortar with bitumen overlay in accordance with AWWA C104, ANSI A21.4. Other optional linings such as fusion bonded epoxy, glass etc., are also available.

**Coating:** The standard coating is a red color, zinc rich primer. Other optional coatings are also available.

### Flange Details - Class 125 (ANSI B16.1)



Size	O.D.	B.C.	T	Bolt Hole Dia.	Bolt Dia. & Length	No. of Bolts
2	6.00	4.50	5/8	3/4	5/8 x 2 1/2	4
2 1/2	7.00	5.00	11/16	3/4	5/8 x 2 1/2	4
3	7.50	6.00	3/4	3/4	5/8 x 2 1/2	4
4	9.00	7.50	15/16	3/4	5/8 x 3	8
5	10.00	8.50	15/16	7/8	3/4 x 3 1/2	8
6	11.00	9.50	1	7/8	3/4 x 3 1/2	8
8	13.50	11.75	1 1/8	7/8	3/4 x 3 1/2	8
10	16.00	14.25	1 3/16	1	7/8 x 4	12
12	19.00	17.00	1 1/4	1	7/8 x 4	12
14	21.00	18.75	1 3/8	1 1/8	1 x 4 1/2	12
16	23.50	21.25	1 7/16	1 1/8	1 x 4 1/2	16
18	25.00	22.75	1 9/16	1 1/4	1 1/8 x 5	16
20	27.50	25.00	1 11/16	1 1/4	1 1/8 x 5	20
24	32.00	29.50	1 7/8	1 3/8	1 1/4 x 5 1/2	20
30	38.75	36.00	2 1/8	1 3/8	1 1/4 x 6 1/4	28
36	46.00	42.75	2 3/8	1 5/8	1 1/2 x 7	32
42	53.00	49.50	2 5/8	1 5/8	1 1/2 x 7 1/2	36
48	59.50	56.00	2 3/4	1 5/8	1 1/2 x 7 3/4	44

All dimensional data in inches.

Napac, Inc.

Orders - Fax: (800) 807-2214