

# "Y" STRAINER

# Model 3800



**Available:**  
Flange x Flange  
Groove x Groove

**Specification:**

- Flange drilling to ANSI B16.1 Class 125
- Groove Ends to AWWA C606

**Working Pressure:**

- 300 psi

**Working Temperature:**

- 32°F to 176°F (0°C to 80°C) rubber gasket

**Corrosion Protection:**

- Fusion bonded epoxy coated Interior and Exterior (FBE) in accordance with ANSI AWWA C550.

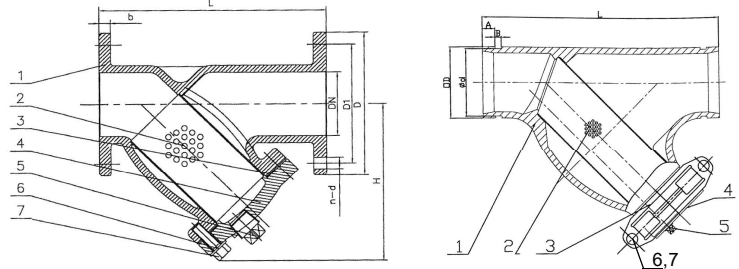


**LISTED**

for Fire Lines

## STANDARD SCREENS

Size	Hole Diameter	Free Flow Area (Flange)	Free Flow Area (Grooved)
2"~2-1/2"	0.16"	48%	48%
3"~4"	0.20"	59%	53%
5"	0.24"	63%	58%
6"~12"	0.25"	64%	56%



## LIST OF MATERIALS

No.	Part (Flanged)	Material	Standard Spec.
1	Body	Ductile Iron	A536 65-45-12
2	Screen	Stainless Steel	AISI 304 (perforated)
3	Gasket	EPDM	-
4	Cover	Ductile Iron	A536 65-45-12
5	Plug	Malleable Iron, Galvanized	ASTM A197
6	Hex Bolts	Carbon Steel, Zinc Plated	ASTM A307 B
7	Flat Washers	Carbon Steel, Zinc Plated	-

## LIST OF MATERIALS

No.	Part (Grooved)	Material	Standard Spec.
1	Body	Ductile Iron	A536 65-45-12
2	Screen	Stainless Steel	AISI 304 (perforated)
3	Gasket	EPDM	-
4	Rigid Coupling & Cap	Ductile Iron	A536 65-45-12
5	Plug	Malleable Iron, Galvanized	ASTM A197
6	Track Bolts	Carbon Steel, Zinc Plated	ASTM A183
7	Hex Nuts	Carbon Steel, Zinc Plated	-

## DIMENSIONS

Size	2"	2.5"	3"	4"	5"	6"	8"	10"	12"
<b>Part No. (Flange x Flange)</b>	3800FF-120	3800FF-125	3800FF-130	3800FF-140	-	3800FF-160	3800FF-180	3800FF-200	3800FF-220
<b>L</b>	7.9	10.0	10.1	12.1	-	18.5	21.6	25.7	29.9
<b>H</b>	6.1	6.5	7.1	9.0	-	12.2	15.5	19.2	21.5
<b>D</b>	5.98	7.01	7.52	9.02	-	10.98	13.50	15.98	19.02
<b>D1</b>	4.74	5.59	6.00	7.50	-	9.51	11.75	14.25	17.01
<b>b</b>	0.63	0.69	0.75	0.94	-	1.00	1.12	1.20	1.26
<b>n-Ød</b>	4-Ø-0.75	4-Ø-0.75	4-Ø-0.75	8-Ø-0.75	-	8-Ø-0.87	8-Ø-0.87	12-Ø-1.00	12-Ø-1.00
<b>Plug Size</b>	1/2	3/4	3/4	1	-	1-1/2	1-1/2	2	2
<b>Part No. (Groove x Groove)</b>	3800GG-120	3800GG-125	3800GG-130	3800GG-140	3800GG-150	3800GG-160	3800GG-180	3800GG-200	3800GG-220
<b>L</b>	9.7	10.7	11.8	14.3	16.5	18.5	24.0	27.0	30.0
<b>OD</b>	2.4	2.9	3.5	4.5	5.6	6.6	8.6	10.7	12.8
<b>d</b>	2.3	2.7	3.3	4.3	5.4	6.5	8.4	10.6	12.5
<b>A</b>	0.6	0.6	0.6	0.6	0.6	0.6	0.8	0.8	0.8
<b>B</b>	0.9	0.9	0.9	1.0	1.0	1.0	1.2	1.3	1.3
<b>Plug Size</b>	1	1	1	1	1	1-1/2	1-1/2	1-1/2	1-1/2

Form No. U0124

Dimensions in Inches

Design and materials are subject to change without notice.



**NAPAC - UNITED Distribution Centers**

229 Southbridge Street, Worcester, MA 01608

Tel: (800) 807-2215 Fax: (800) 807-2214

www.napacinc.com

Jacksonville, Florida

0318