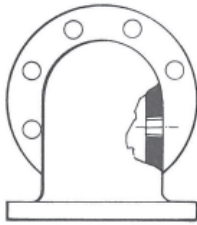


BOSS AND TAP LOCATIONS

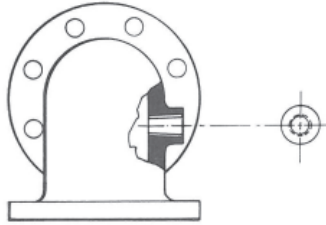
Method of designating location of tapped holes and/or bosses in cast iron flanged fittings



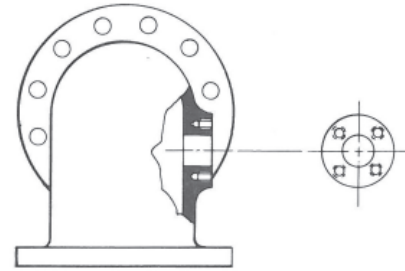
**Napac,
Inc.**



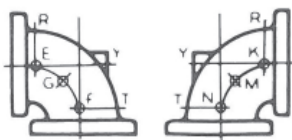
TAPPED HOLE THROUGH WALL



REGULAR BOSS WITH PIPE TAP



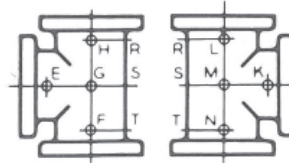
FLANGE BOSS WITH BLIND TAPPED HOLES



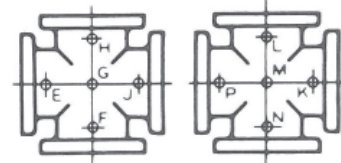
90° ELBOW
STRAIGHT SIZE



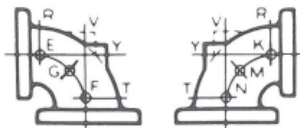
90° ELBOW



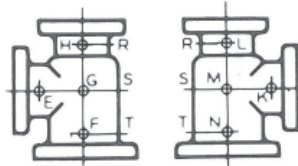
TEE
STRAIGHT SIZE



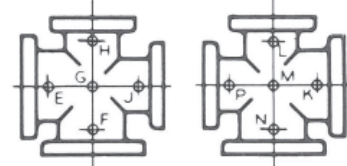
CROSS
STRAIGHT SIZE



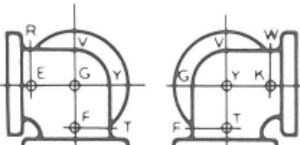
90° ELBOW
REDUCING SIZE



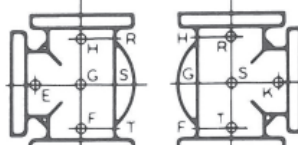
TEE
REDUCING SIZE



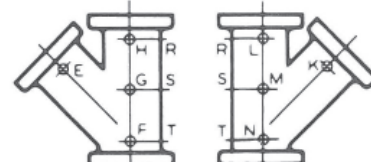
CROSS
REDUCING SIZE



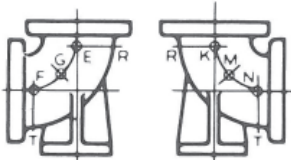
FRONT VIEW SIDE VIEW
SIDE OUTLET 90° ELBOW
STRAIGHT SIZE



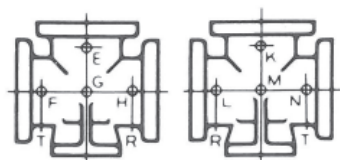
FRONT VIEW SIDE VIEW
SIDE OUTLET TEE
STRAIGHT SIZE



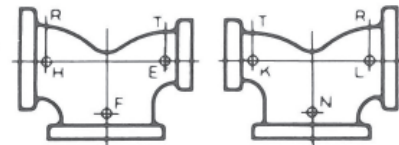
45° LATERAL
STRAIGHT SIZE



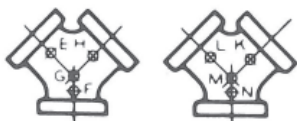
90° BASE ELBOW



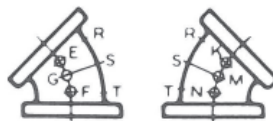
BASE TEE



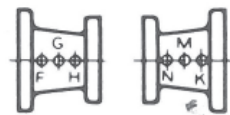
DOUBLE BRANCH ELBOW



TRUE 'Y'



45° ELBOW



REDUCER



ECCENTRIC REDUCER

The illustrations show two views of the same fitting and represent fittings with symmetrical shapes, with the exception of the side outlet elbow and the side outlet tee.

When a cast iron flanged fitting is wanted with a tapped connection, give the size of the tapping required, and designate its location by means of a letter selected from the correct view of the fitting in question.