

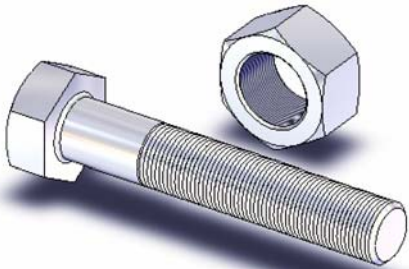


Heavy Hex Bolts and Nuts

for Flanges to B16.1-125#, B16.5-150#

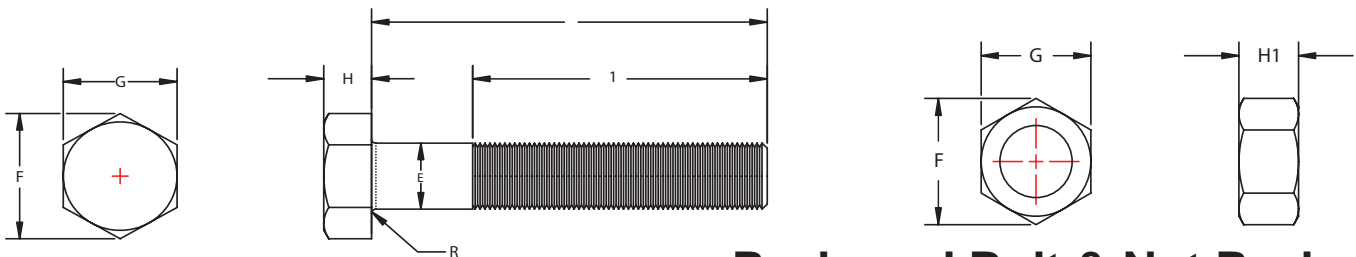
Material: Bolts - ASTM A307 Grade B, Nuts -ASTM A563, Grade A

UNITED BRAND



Note: All dimensions in inches

Nominal Size	Part No.	E	G	F	H	HI	R	L ₁	L
		Body Diameter	Width Across Flats	Max. Width Across Corners	Bolt Head Height	Nut Height	Radius of Fillet	Thread Length	Shaft Length
1/2 x 2	BN7025-050-200	0.515	7/8	1.010	11.32	31/64	0.01-0.03	1.25	2.00
5/8 x 2-1/2	BN7025-062-250	0.642	1-1/16	1.227	27/64	39/64	0.02-0.06	1.50	2.50
5/8 x 3	BN7025-062-300	0.642	1-1/16	1.227	27/64	39/64	0.02-0.06	1.50	3.00
3/4 x 3-1/2	BN7025-075-350	0.768	1-1/4	1.443	1/2	47/64	0.02-0.06	1.75	3.50
3/4 x 4-1/2	BN7025-075-450	0.768	1-1/4	1.443	1/2	47/64	0.02-0.06	1.75	4.50
7/8 x 4	BN7025-082-400	0.895	1-7/16	1.660	37/64	55/64	0.02-0.06	2.00	4.00
7/8 x 4-1/2	BN7025-082-450	0.895	1-7/16	1.660	37/64	55/64	0.02-0.06	2.00	4.50
1 x 4-1/2	BN7025-100-450	1.022	1-5/8	1.876	43/64	63/64	0.03-0.09	2.25	4.50
1-1/8 x 5	BN7025-112-500	1.149	1-13/16	2.093	3/4	1-7/32	0.03-0.09	2.50	5.00
1-1/8 x 5-1/2	BN7025-112-550	1.149	1-13/16	2.093	3/4	1-7/32	0.03-0.09	2.50	5.50
1-1/4 x 6-1/2	BN7025-125-650	1.277	2	2.309	27/32	1-7/32	0.03-0.09	2.75	6.50
1-1/2 x 7	BN7025-150-700	1.531	2-3/8	2.742	1	1-15/32	0.03-0.09	3.25	7.00
1-1/2 x 7-1/2	BN7025-150-750	1.531	2-3/8	2.742	1	1-15/32	0.03-0.09	3.25	7.50
1-1/2 x 8	BN7025-150-800	1.531	2-3/8	2.742	1	1-15/32	0.03-0.09	3.25	8.00



Packaged Bolt & Nut Packs (water resistant)

1. Heavy hex head steel bolts to ANSI B18.2.1 with heavy hex steel nuts to ANSI B18.2.2. Bolts to be threads to ANSI B1.1 unified inch screw threads, Class 2A external & Class 2B internal. The steel material to conform to ASTM A307 specification for carbon steel externally threaded standard fasteners, Grade B.
2. Zinc Plated per ASTM B633

Part No.	Class 125/150 Flange Size	Bolt Diameter and Length	No. of Bolts per Poly Bag	Master Box (Qty. of Sets)
FBZ03	2-1/2	5/8 x 2-1/2	4	20
FBZ04	3	5/8 x 3	8	16
FBZ08	5	3/4 x 3-1/2	8	8
FBZ12	6	7/8 x 4	12	4
FBZ14	10	1 x 4-1/2	12	1
FBZ16	12	1 x 4-1/2	16	1
FBZ18		1-1/8 x 5	16	1
FBZ20		1-1/8 x 5	20	1
FBZ24		1-1/4 x 5-1/2	20	1
FBZ30		1-1/4 x 6-1/2	14	2
FBZ36		1-1/2 x 7	8	4
FBZ42		1-1/2 x 7-1/2	9	4
FBZ48		1-1/2 x 8	11	4



Form No. U0067 (page1)

NAPAC, Inc.

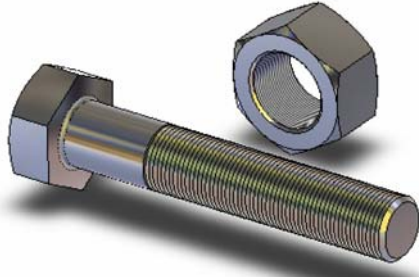
229 Southbridge Street, Worcester, MA 01608
Tel.: (800) 807-2215 • Fax: (800) 807-2214

Stainless Steel Hex Bolts and Nuts

SS 304 and SS 316

For Flanges to B16.1-125#, B16.5-150#

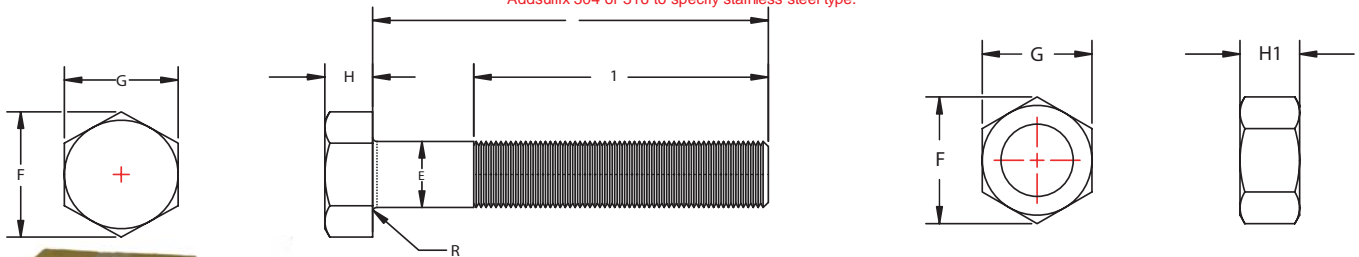
UNITED BRAND



Nominal Size	Part No.	E	G	F	H	HI	R	L ₁	L
		Body Diameter	Width Across Flats	Max. Width Across Corners	Bolt Head Height	Nut Height	Radius of Fillet	Thread Length	Shaft Length
1/2 x 2	BN6025-050-200*	0.515	3/4	0.866	11/32	7/16	0.01-0.03	1.25	2.00
5/8 x 2-1/2	BN6025-062-250*	0.642	15/16	1.083	27/64	35/64	0.02-0.06	1.50	2.50
5/8 x 3	BN6025-062-300*	0.642	15/16	1.083	27/64	35/64	0.02-0.06	1.50	3.00
3/4 x 3-1/2	BN6025-075-350*	0.768	1-1/8	1.299	1/2	41/64	0.02-0.06	1.75	3.50
3/4 x 4-1/2	BN6025-075-450*	0.768	1-1/8	1.299	1/2	41/64	0.02-0.06	1.75	4.50
7/8 x 4	BN6025-082-400*	0.895	1-5/16	1.516	37/64	3/4	0.02-0.06	2.00	4.00
7/8 x 4-1/2	BN6025-082-450*	0.895	1-5/16	1.516	37/64	3/4	0.02-0.06	2.00	4.50
1 x 4-1/2	BN6025-100-450*	1.022	1-1/2	1.732	43/64	55/64	0.03-0.09	2.25	4.50
1-1/8 x 5	BN6025-112-500*	1.149	1-11/16	1.949	3/4	31/32	0.03-0.09	2.50	5.00
1-1/8 x 5-1/2	BN6025-112-550*	1.149	1-11/16	1.949	3/4	1-1/16	0.03-0.09	2.50	5.50
1-1/4 x 6-1/2	BN6025-125-650*	1.277	1-7/8	2.165	27/32	1-9/32	0.03-0.09	2.75	6.50
1-1/2 x 7	BN6025-150-700*	1.531	2-1/4	2.598	1	1-9/32	0.03-0.09	3.25	7.00
1-1/2 x 7-1/2	BN6025-150-750*	1.531	2-1/4	2.598	1	1-9/32	0.03-0.09	3.25	7.50
1-1/2 x 8	BN6025-150-800*	1.531	2-1/4	2.598	1	1-9/32	0.03-0.09	3.25	8.00

Note: All dimensions in inches

*Add suffix 304 or 316 to specify stainless steel type.



1. Hex head stainless steel bolts to ANSI B18.2.1 with hex stainless steel nuts to ANSI B18.2.2. Bolts to be threaded to ANSI B1.1 unified inch screw threads, Class 2A external & Class 2B internal. The stainless steel material is available in either Type 304 or Type 316.

Packaged Bolt & Nut Packs (water resistant)

Stainless Steel 304

Part No.	Class 125/150 Flange Size	Bolt Diameter and Length	No. of Bolts per Flange	No. of Bolts per Poly Bag	Master Box (Qty. of Sets)
FBS03-304	2-1/2	5/8" x 2-1/2"	4	4	20
FBS04-304	3	5/8" x 3"	8	8	16
FBS08-304	5	3/4" x 3-1/2"	8	8	8
FBS12-304	6	7/8" x 4"	12	12	4
FBS14-304	8	1" x 4-1/2"	12	12	1
FBS16-304	10	1" x 4-1/2"	16	16	1
FBS18-304	12	1-1/8" x 5"	16	16	1
FBS20-304	14	1-1/8" x 5"	20	20	1
FBS24-304	16	1-1/4" x 5-1/2"	20	20	1
FBS30-304	18	1-1/4" x 6-1/2"	28	14	2 boxes
FBS36-304	20	1-1/2" x 7"	32	8	4 boxes

Stainless Steel 316

Part No.	Class 125/150 Flange Size	Bolt Diameter and Length	No. of Bolts per Flange	No. of Bolts per Poly Bag	Master Box (Qty. of Sets)
FBS03-316	2-1/2	5/8" x 2-1/2"	4	4	20
FBS04-316	3	5/8" x 3"	8	8	16
FBS08-316	5	3/4" x 3-1/2"	8	8	8
FBS12-316	6	7/8" x 4"	12	12	4
FBS14-316	8	1" x 4-1/2"	12	12	1
FBS16-316	10	1" x 4-1/2"	16	16	1
FBS18-316	12	1-1/8" x 5"	16	16	1
FBS20-316	14	1-1/8" x 5"	20	20	1
FBS24-316	16	1-1/4" x 5-1/2"	20	20	1
FBS30-316	18	1-1/4" x 6-1/2"	28	14	2 boxes
FBS36-316	20	1-1/2" x 7"	32	8	4 boxes

Form No. U0067(Page 2.)

NAPAC, Inc.

229 Southbridge Street, Worcester, MA 01608
Tel.: (800) 807-2215 • Fax: (800) 807-2214