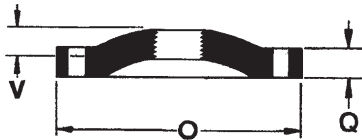
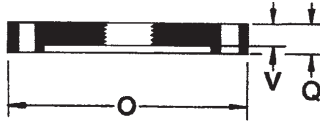


Threaded Flanges ANSI B16.1, Class 125

UNITED BRAND

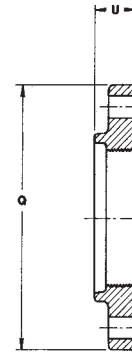
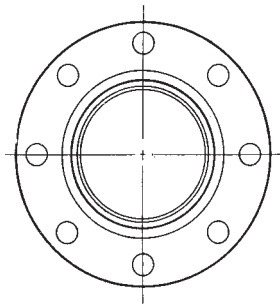
BLIND FLANGE w/2" NPT

DIMENSIONS IN INCHES - WEIGHT IN LBS.



Size	Part No. (C.I.)	Part No. (D.I.)	O	Q	V	Weight
2-1/2	W-61F-0250-G	W-61F-0250-D	7.00	.68	.62	7
3	W-61F-0300-G	W-61F-0300-D	7.50	.75	.69	9
4	W-61F-0400-G	W-61F-0400-D	9.00	.94	.88	16
5	W-61F-0500-G	W-61F-0500-D	10.00	.94	.88	18
6	W-61F-0600-G	W-61F-0600-D	11.00	1.00	.94	25
8	W-61F-0800-G	W-61F-0800-D	13.50	1.12	1.06	42
10	W-61F-1000-G	W-61F-1000-D	16.00	1.19	1.12	62
12	W-61F-1200-G	W-61F-1200-D	19.00	1.25	.81	85
14	W-61F-1400-G	W-61F-1400-D	21.00	1.38	.88	120
16	W-61F-1600-G	W-61F-1600-D	23.50	1.44	1.00	145
18	W-61F-1800-G	W-61F-1800-D	25.00	1.56	1.06	185
20	W-61F-2000-G	W-61F-2000-D	27.50	1.69	1.12	245
24	W-61F-2400-G	W-61F-2400-D	32.00	1.88	1.25	370
30	W-61F-3000-G	W-61F-3000-D	38.75	2.12	1.44	500
36	W-61F-3600-G	W-61F-3600-D	46.00	2.38	1.62	790
42	W-61F-4200-G	W-61F-4200-D	53.00	2.62	1.81	1175
48	W-61F-4800-G	W-61F-4800-D	59.50	2.75	2.00	1585

DUCTILE IRON
THREADED FLANGE
(for use on fabricated ductile
pipe to AWWA C115)



Nom. Pipe Size	Part No.	Rough O.D. of Pipe	Overall Thk. U	O.D. of Flange Q	Weight	Bolt Circle	Bolt Hole Dia.	No. of Bolt Holes
3	W-500-03-D	3.96	1.25	7.50	8	6.00	3/4	4
4	W-500-04-D	4.80	1.37	9.00	14	7.50	3/4	8
6	W-500-06-D	6.90	1.56	11.00	19	9.50	7/8	8
8	W-500-08-D	9.05	1.87	13.50	30	11.75	7/8	8
10	W-500-10-D	11.10	2.00	16.00	41	14.25	1	12
12	W-500-12-D	13.20	2.25	19.00	62	17.00	1	12
14	W-500-14-D	15.30	2.50	21.00	75	18.75	1-1/8	12
16	W-500-16-D	17.40	2.75	23.50	96	21.25	1-1/8	16
18	W-500-18-D	19.50	3.00	25.00	100	22.75	1-1/4	16
20	W-500-20-D	21.60	3.25	27.50	128	25.00	1-1/4	20
24	W-500-24-D	25.80	3.50	32.00	175	29.50	1-3/8	20
30	W-500-30-D	32.00	3.37	38.75	250	36.00	1-3/8	28
36	W-500-36-D	38.30	4.00	46.00	375	42.75	1-5/8	32
42	W-500-42-D	44.50	4.50	53.00	532	49.50	1-5/8	36
48	W-500-48-D	50.80	5.12	59.50	663	56.00	1-5/8	44

Note: Design subject to change without notice.

NAPAC, Inc.

229 Southbridge Street, Worcester, MA 01608

Tel.: (800) 807-2215 • Fax: (800) 807-2214